



PROSPECTUS 2026



“ Education is not Preparation for
Life; Education is Life itself ”



CONTENTS

Vision

Mission

Introduction

Board of Trustees

Message from the Principal SMDC

About SMDC

Accreditation Status

Why Choose SMDC?

MBBS Curricular

Medical Enrichment Program

EDUCATION FACILITIES

Lecture Halls

Museums

Auditorium

Library

Computer Lab

Laboratories

Skills Lab

Gymnasium

Hostel

Food Court

Co-Curricular Activities

BASIC SCIENCES DEPARTMENTS

CLINICAL SCIENCES DEPARTMENTS

OFFICE OF STUDENT AFFAIRS

SHALAMAR HOSPITAL

FAUJI FOUNDATION HOSPITAL

PARTNERSHIP

Faculty

Success Stories

Code of Conduct

Attendance Policy

Detained Students Attendance & Assessment Policy

Admission Informations

Fees and Other Dues

Scholarships

8th International Conference

2nd Integrated Convocation

VISION



MISSION



Shalamar Medical & Dental College aspires to be a leading institution globally recognized for its excellence in education, research, and clinical care. We are committed to fostering a spirit of lifelong learning, innovation, and compassionate healthcare. Our focus is on integrating research and education with advanced technology and clinical care to produce graduates capable of delivering cutting-edge, cost-effective healthcare. We shall imbibe in our students the highest values of medical ethics to be exemplary physicians who can be a source of enlightenment for others and be leaders in their fields.

Shalamar Medical & Dental College aims to equip medical students and healthcare professionals from diverse backgrounds with the knowledge, skills, and attitudes required to meet the primary needs of the region and nation. It also aims to train the selected young men and women with quality medical education having the highest moral and ethical standards that are necessary in disciplined health professionals. The mission will be achieved through a commitment to the values of quality, excellence, compassion, integrity, and moral responsibility.

INTRODUCTION

Shalamar Medical & Dental College aims to equip medical students and healthcare professionals from diverse backgrounds with the knowledge, skills, and attitudes required to meet the primary needs of the region and nation. It also aims to train the selected young men and women with quality medical education having the highest moral and ethical standards that are necessary in disciplined health professionals. The mission will be achieved through a commitment to the values of quality, excellence, compassion, integrity, and moral responsibility.

The journey of Businessmen Hospital Trust (BHT) began with Chaudhry Nazar Mohammad (Late) who set out to create the "Businessmen Hospital Trust (BHT) in 1974. He envisioned a facility offering quality healthcare to the community and was joined by like-minded visionaries including Ch. Mohammad Husain and Mr. Shahbaz-ud-Din Chaudhry.

The evolution of the facility and where it stands today has only been possible through the tireless efforts of the capable & professional team who have worked with the trustees to implement the vision of Chaudhry Nazar Mohammad (Late) to create an institution to serve the needs of the community. Over time BHT has evolved into the 500-bedded Shalamar Hospital, Shalamar Nursing College, Shalamar Medical & Dental College, and Shalamar School of Allied Health Sciences.

SHALAMAR HOSPITAL

Shalamar Hospital is a Not-For-Profit hospital situated in the heart of Lahore city. The Hospital was instituted by the Businessmen Hospital Trust in 1978, following the unwavering determination, great vision and generous contributions of its founders. Shalamar Hospital is committed to providing quality health care to every individual in society who needs it.

From a humble beginning Shalamar Hospital has evolved into 500 bedded health care facility with state-of-the-art medical equipment. The Hospital provides high-quality multi-disciplinary services in 30+ specialties. Besides this, hospital has established a community outreach program to serve underprivileged masses. The Hospital is equipped with 11 modern operating rooms for patients undergoing surgery, gynecological procedures and cases of trauma.

Shalamar Hospital cares for almost 600,000 patients every year through its team of 1700 health care providers and support services. The Patient Welfare Department ensures relief to those patients who are in need. Shalamar Hospital is the largest contributor in Sehat Sahulat program initiative of the government in the city. Our Sehat card contributions and welfare efforts are well-known and acknowledged by the concerned authorities. The Shalamar Hospital is accredited by the Pakistan Medical & Dental Council, Pakistan Nursing Council, and College of Physicians and Surgeons Pakistan for training purposes. At present, more than 100 residents are completing their Post-graduate training in multiple disciplines.

SHALAMAR NURSING COLLEGE

Nursing is the backbone of healthcare and the role of a nurse in a health facility is crucial. The Shalamar Nursing College (SNC) was established in 2006 to meet the growing demand for nursing professionals both locally and internationally.

The SNC campus is located within the SIHS premises offering training programs that serve as a foundation for long-term career opportunities in the field. The training at SNC prepares nursing graduates to follow a path towards nursing or other career opportunities like teaching, research, and advanced practice nursing through a rigorous structure of instruction and training.

SHALAMAR MEDICAL & DENTAL COLLEGE

Conceptualized in the year 2007, Shalamar Medical & Dental College (SMDC) inducted its first set of students in the academic year 2009-10. The priority of SMDC is to provide an environment conducive to students for academic learning and clinical training. Academic training at SMDC is constantly innovating and evolving. The upgradation of its teaching structure to the modular system is a reflection of that ethos. The curriculum now includes problem-based learning, small group discussions, and interactive learning supplemented by the latest educational aids taught by highly qualified faculty members. To cultivate the ideals of morality and ethics in every medical student, our institution emphasizes the fundamental importance of teaching Behavioral Sciences and Medical Ethics. Today, with 750 students, SMDC inspires lifelong learning and dedication to the principles of health care.

SHALAMAR SCHOOL OF ALLIED HEALTH SCIENCES

In 2015, the Shalamar School of Allied Health Sciences (SSAHS) was established, making the Shalamar Institute of Health Sciences an establishment offering a complete spectrum of health education, to create a skilled healthcare workforce for the welfare of the community. SSAHS offers a Doctor of Physical Therapy (DPT) Bachelors in Medical Lab Technology (MLT), Bachelors in Medical Imaging Technology (MIT), Bachelor in Optometry & Orthoptics (OPT), and Bachelor in Operation Theatre Technology (OTT) programs at the undergraduate level.



BUSINESSMEN HOSPITAL TRUST



Mr. Shahid Hussain

Chairman



Mr. Syed Babar Ali

Member



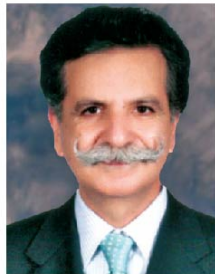
Mr. Omar Saeed

Member



Mr. Ibrar A. Mumtaz

Member



Mr. Mian Altaf M. Saleem

Member



Mr. M. Munir Chaudry

Member

MESSAGE



Prof. M. Zahid Bashir

Principal

Shalamar Medical & Dental College

Welcome to Shalamar Medical & Dental College.

I welcome you all to Shalamar Medical & Dental College, Lahore. It gives me great pleasure to be a team leader along with our faculty and students to bring the college to the forefront of medical colleges in the region.

We aspire to build the most dynamic academic nexus to become a center of excellence in teaching, medical research, and clinical training. We train our students to be competitive, innovative, knowledgeable, passionate, and caring healthcare professionals.

A problem-based learning (PBL) system has been implemented which familiarizes students to clinical medicine in the initial years of their studies. Our students are also encouraged to be involved in clinical and basic research. It is expected of them to excel not only as physicians but also as scientists with the ability to contribute to furthering knowledge, particularly in disease-related fields relevant to the community.

Most of our graduates are currently in post-graduate programs in and outside Pakistan. We are in the process of establishing a comprehensive alumni program. In addition, we advocate an open door policy and our main objective is to build trust between faculty members and students.

We welcome you to join us in our endeavors to make SMDC recognized internationally.

SHALAMAR MEDICAL AND DENTAL COLLEGE

Shalamar Medical & Dental College is a constituent unit of Shalamar Institute of Health Sciences and is ranked among the top-tier medical colleges in Pakistan. In a short period, the institution has garnered a reputation for providing quality education, a tradition of excellence, and inculcating a passion for medicine in its students.

The institution was completed in 2009 and was the third project of the Businessmen Hospital Trust. First batch of medical students was enrolled in the academic session 2009-10. From 100 students in the first year of admission, the enrollment has now grown to 150 pupils each year.

SMDC is among the few medical colleges in Pakistan with a dedicated teaching hospital providing hands-on training to the students. The college grooms its students to adapt to the continuously changing landscape of modern medicine. The curriculum is developed taking into consideration both the academic and clinical training of the students.

The curriculum is upgraded from time to time and now includes problem-based learning, small group discussions, and interactive learning supplemented by the latest educational aids taught by experienced faculty members. SMDC takes pride in its exceptional faculty who share the institutional values of excellence in education and lifelong learning. The purpose-built centrally air-conditioned campus makes sure that the staff and students are facilitated with the latest amenities and facilities to ensure there are no obstacles in their academics or research.

SMDC is affiliated with the University of Health Sciences (UHS), and is recognized by Pakistan Medical and Dental Council. The College is listed in the directory of Medical Schools of the World Health Organization. To date, more than 1416 students have accomplished the dream of becoming medical professionals at SMDC.

SMDC is recognized by the College of Physicians and Surgeons Pakistan (CPSP) for postgraduate training in multiple disciplines including Medicine, Surgery, Gynaecology and Obstetrics, Paediatrics, Orthopaedics, Otorhinolaryngology (ENT), Anaesthesia, Dermatology, Cardiology, Radiology, and Ophthalmology, Urogynecology, and Pulmonology. Currently, more than 100 post-graduate residents are undergoing training in various specialties.

The institution's success is not limited to its academic standard only, SMDC is also recognized for its extracurricular & co-curricular activities which help create an environment of creation, cooperation, and collaboration fostering growth and lifelong friendships.

ACCREDITATIONS

- Recognized & Registered by the Pakistan Medical and Dental Council
- Affiliated with the University of Health Sciences, Lahore
- Approved by the Ministry of Health, Government of Pakistan
- Recognized by the College of Physicians and Surgeons Pakistan (CPSP)
- Included in the WHO Avicenna Directory of Medical Colleges
- Included in International Medical Education Directory by FAIMER
- Global Education in Medical Exchange (GEMx) Partner Institute
- Educational Commission for Foreign Medical Graduates



WHY CHOOSE SMDC?

	 <p>Included In International Medical Education Directory By FAIMER</p>	
 <p>Included In WHO Avicenna Directory of Medical Colleges</p>		
 <p>Recognized By The College of Physicians & Surgeons Pakistan</p>		



750

CURRENT STUDENTS



201

FACULTY



1436

Alumni Body

MBBS CURRICULUM

Year-I

- > Foundation: Hematopoietic & Lymphatic
- > Musculoskeletal & Locomotion – I
- > Cardiovascular –I Respiratory –I

Year-II

- > GIT & Nutrition–I, Renal–I
- > Endocrinology & Reproduction–I, Head & Neck, Special Senses
- > Neurosciences– I, Modular Landscape
- > The Holy Quran, Islamiyat, Pakistan Studies, Civics

Year-III

- > Foundation-2 & EBM, General & Clinical Pharmacology Hematopoietic Immunity & Transplant, and Forensic Medicine & Toxicology-1
- > Neoplasia, Infectious Diseases, Musculoskeletal & Locomotion-2, and Forensic Medicine & Toxicology 2
- > Cardiovascular-2 Respiratory-2, Community Medicine & Family Medicine-1 Forensic Medicine & Toxicology-3

Year-IV

- > Community Medicine
- > Special Pathology
- > Otorhinolaryngology (ENT)
- > Ophthalmology (EYE)

Year-V

- > Medicine (2 Papers)
- > Surgery (2 Paper)
- > Obstetrics & Gynecology (2 paper)
- Paediatric Medicine

SMDC also offers courses in research, communication skills and medical ethics, and Professionalism as longitudinal themes spread over the five-year program.

MEDICAL ENRICHMENT PROGRAM

Shalamar Medical and Dental College (SMDC) has started a seven-star medical enrichment program in partnership with Lahore University of Management Sciences (LUMS).

The six-year Medical Enrichment Program will equip students with the knowledge to stand out and pave the way to an exciting and rewarding career in healthcare. The students who get admission at SMDC can spend the first year of their medical education at LUMS and then continue their 5-year MBBS program at SMDC.

Program Benefits

1. This program will help strengthen the fundamental concepts of biology required to understand disease development, disease progression, and diagnostics.
2. Studying these courses will enable SMDC graduates to be globally competitive and at par with international medical graduates.
3. Graduates from this program will be equipped with the knowledge and skills to contribute towards research.
4. Imparting such knowledge and skills in MBBS students will help initiate quality research in medical colleges and universities. This will help Pakistan to contribute towards new knowledge generation and discoveries in medicine.

EDUCATION FACILITIES

LECTURE HALLS

Developed to house 150 students, lecture halls at SMDC are fully air-conditioned and equipped with multimedia facilities which include Wi-Fi, computers, and overhead projectors. The design of the lecture hall ensures flawless acoustics resulting in an environment favourable for both learning and teaching. The exceptional lecture halls highlight SMDC's top priority to facilitate students in learning.



MUSEUMS



The academic component of medical education is not complete without museums which comprise models of the human anatomy, specimens, and mannequins.

SMDC has an extensive collection of the above mentioned in museums of Community Medicine, Anatomy, Pathology, and Forensic Medicine & Toxicology; a requisite for proper training of students.

AUDITORIUM

The auditorium at Shalamar Medical & Dental College is named after the founding members of the Business Hospital Trust, Ch. Nazar Mohammad (Late) & Ch. Mohammad Husain (Late).



LIBRARY

There is an extensive collection of textbooks, reference books, illustrated collections, and up-to-date journals which serves as a guide to both students and faculty alike.



Library also has a vast collection of audio, videos, CDs, and DVDs to further support the educational and research experience.

The library is regularly updated with the latest journals and manuscripts to meet the needs of the academicians and students of SMDC.

The main library is further supplemented by the departmental libraries which house relevant literature to enhance the learning experience. The library is also linked with HEC Digital Library.

Library timings are 8:00 a.m. - 12:00 Midnight.

COMPUTER LAB

The spacious and state-of-the-art computer laboratory currently has 75 computers catering to the needs of the students on campus. The computer lab facilitates learning resources and offers high-speed internet at all times ensuring that the students face no hurdles in their academic pursuits. The venue serves as not only an information resource center but also for students to interact and develop their presentations, assignments, and projects for their academic work.



LABORATORIES

Modern medical education requires fully equipped laboratories for multiple subjects to impart practical training to students in their respective subjects. The laboratories at SMDC are equipped with multimedia facilities, a power lab, and the latest apparatus required for each specific subject. Currently, SMDC has 6 laboratories which include laboratory for Anatomy (Histology), Forensic Medicine, Pathology, and Physiology, Biochemistry, Pharmacology, and a separate lab for advanced research.



SKILLS LAB

The Skills Laboratory at SMDC offers students to develop their practical clinical techniques and be able to correctly examine, diagnose and treat their future patients. Cardiopulmonary resuscitation, pelvic, breast, and head mannequins are some of the teaching tools available for training. Dummy arms, legs, and backs are used to teach skills such as phlebotomy, inserting intravenous drips, executing a lumbar puncture and applying sutures, etc.



GYMNASIUM

A healthy mind, body, and soul are imperative for personal and professional growth. To ensure well-being of its students, faculty, and staff members and an air-conditioned gymnasium has been set up on campus. The gymnasium is equipped with the latest equipment and has separate timings for males and females. The coaching staff is also available in the gymnasium for training and guidance.



HOSTELS

We understand the importance of a comfortable and secure living environment, especially for our students. Our hostels are designed to provide a nurturing atmosphere that complements your academic journey. With well-appointed rooms, modern amenities, and dedicated staff, we ensure that your stay here is not just convenient, but also enjoyable. Our hostels encourage a sense of community, where lifelong friendships are forged and cultural exchange thrives.



FOOD COURT

The food court at SMDC meets the dietary needs of the students, faculty, and staff of the institution. The food court is located in the basement of the college with large windows bringing in ample sunlight creating an inviting atmosphere. The food is prepared under strict hygienic conditions in a professional-grade kitchen.

The food court offers an assortment of food items at reasonable rates for breakfast, snacks, lunch, and dinner and is licensed by the Punjab Food Authority, ensuring the highest standards of food safety and quality.



CO-CURRICULAR ACTIVITIES

SMDC is not only dedicated to academic excellence but also to fostering holistic development among our students. Through a diverse range of co-curricular activities, we aim to provide a well-rounded educational experience that goes beyond the classroom. From student-led clubs and organizations covering various interests, and sports events that promote teamwork and fitness, to cultural celebrations that embrace diversity, there's something for everyone to get involved in. These activities not only enhance your skills and talents but also provide a platform for networking, personal growth, and lifelong memories.

Students can join the following student-run societies and clubs

- Arts & Photography Club
- Music Club
- Adventure Club
- Sports Committee
- Debating Society
- Dramatics Society
- Literary Society
- Horticulture Society
- Patient Welfare Society



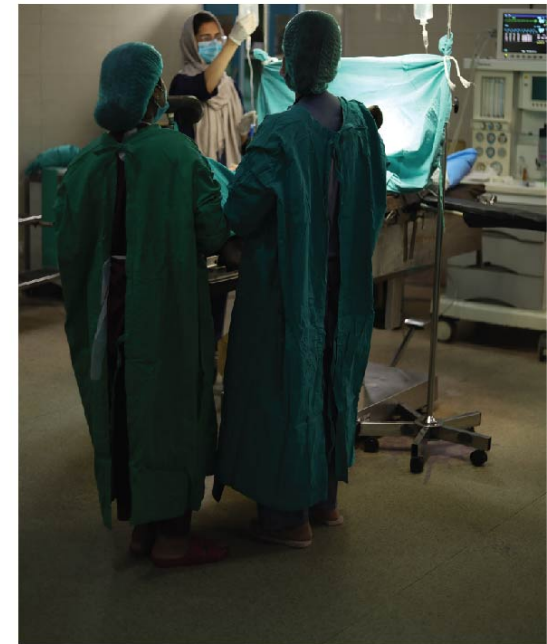
DEPARTMENTS

BASIC SCIENCES

- Anatomy
- Biochemistry
- Bioethics
- Clinical Research
- Community Health Sciences
- English Linguistics and Communication
- Forensic Medicine & Toxicology
- Medical Education
- Pathology
- Pharmacology
- Physiology
- Research & Innovation

CLINICAL SCIENCES

- Anaesthesia
- Burns & Plastic Surgery
- Cardiology & Cardiovascular Surgery
- Dermatology
- General Surgery
- Internal Medicine
- Obstetrics & Gynaecology
- Ophthalmology
- Orthopaedics
- Otorhinolaryngology (ENT)
- Paediatrics
- Psychiatry & Behavioral Sciences
- Radiology
- Urology



DEPARTMENT OF ANATOMY

The Department of Anatomy at Shalamar Medical and Dental College (SMDC) serves as a vital foundation for the medical and dental sciences, offering an academically rigorous and pedagogically progressive environment for undergraduate learners. The department is deeply committed to nurturing not only a strong understanding of human structure but also the application of anatomical knowledge in clinical practice.

At SMDC, innovation in teaching lies at the heart of our educational philosophy. The department has adopted a student-centered approach that promotes active engagement, critical thinking, and long-term retention. Teaching methodologies are designed to cater to a wide spectrum of learning styles and include:

- **Gamification**, where learning is transformed into an interactive and enjoyable experience through educational games and challenges, making complex anatomical concepts easier to grasp.
- **Problem-Based Learning (PBL)**, where students collaboratively explore clinical scenarios, encouraging self-directed learning, teamwork, and application of anatomical principles.
- **Task-Based Learning (TBL)**, which integrates real-life tasks to build professional competence and contextual understanding.
- **Cadaveric Dissections**, which remain a hallmark of anatomical education at SMDC, allowing students to explore the human body in its real form, develop respect for life and death, and gain invaluable hands-on experience.



The department also boasts an extensive range of **educational and learning resources** that elevate the student learning experience. These include:

- A vast collection of anatomical models, histological slides, charts, and textbooks.
- **Prosected specimens** prepared by expert faculty to highlight key anatomical structures.
- **Plastinated bodies** and **cadavers**, which offer both durability and detail for long-term learning and demonstration.
- State-of-the-art **3D anatomical software**, providing interactive and virtual dissection experiences, ideal for self-study and remote learning environments.

The impact of this comprehensive and integrated approach to anatomy education is reflected in the **exceptional academic outcomes** of our students. SMDC has consistently ranked among the **top three medical colleges affiliated with the University of Health Sciences (UHS)** in professional examinations, a distinction that underscores the department's dedication to academic excellence and continuous improvement.

In line with our mission to advance anatomical sciences and cultivate academic leadership, the department now offers a Postgraduate Program in Anatomy. This program is designed to produce competent anatomists equipped with strong teaching, research, and academic skills. It opens pathways for careers in teaching, curriculum development, educational scholarship, and biomedical research.

The Department of Anatomy at SMDC continues to set benchmarks in medical education through its blend of tradition, technology, and innovation—empowering students to become compassionate, skilled, and knowledgeable healthcare professionals of the future.



DEPARTMENT OF BIOCHEMISTRY

Biochemistry and medicine enjoy a mutually cooperative relationship. It is the study of biological processes at the cellular and molecular levels. It illuminates many aspects of health and disease.

The Department of Biochemistry at SMDU has competent and experienced research-oriented faculty committed to provide quality education to students. The objective of the department is to make the students learn the molecular basis of all biochemical processes with clinical correlation. Biochemistry is taught in integration with other subjects both horizontally and vertically. Department is also committed to providing a forum for research to undergraduate and postgraduate students.

The faculty provides training to students via lectures, labs/practical, small group discussions, and problem-based learning sessions so they understand the fundamental principles of the subject and apply scientific reasoning to solve the problems of biochemistry and biochemical processes. Flip classroom techniques and effective feedback mechanisms are also a part and parcel of the curriculum. Faculty members are also trained to deliver online lectures, tutorials, quizzes, assignments, and assessments.

The department has a state-of-the-art laboratory, completely furnished with equipment including PCR, ELISA, Gel Electrophoresis, Microlab-300, Spectrophotometers, -80 Refrigerator, -20 refrigerator, Ultracentrifuge, Centrifuge, Microscopes, High-grade distillation units, and Incubators allowing students to carry out experiments and understand the practical application of the subject. The students are encouraged to participate in the research projects of the department and are facilitated to present their work at international and national conferences.



The department is focused on creating a learning environment for the students and is creating opportunities for academic & professional development and community service. The department is also recognized for M.Phil. and FCPS training by accrediting bodies.



DEPARTMENT OF BIOETHICS

Bioethics is the study of the ethical issues emerging from advances in biology and medicine. Shalamar Medical and Dental College launched the Department of Bioethics in 2017. Bioethics, an emerging subject worldwide is fast becoming an integral part of medical education. SMDC has made Bioethics part of the curriculum for both under graduate and postgraduate students. The department runs a postgraduate Diploma in Healthcare Ethic & Professionalism (DHEP), a blended learning program for healthcare professionals, since 2021. The Department of Bioethics is a member of the International Network of the chair in the Bioethics/World Medical Association Cooperation Center.

The goals of the department include:

Curriculum Development

The undergraduate Bioethics curriculum at Shalamar Medical & Dental College has been adapted from UNESCO's core curriculum and is being taught on a longitudinal theme. The post-graduate curriculum is clinically oriented.

Research

Research Ethics is an essential part of the healthcare profession. The department of Bioethics has developed interactive workshops for professionals to understand the ethics of doing research in healthcare and to understand the guidelines and process of the Institutional Review Board.

Personal Moral Development

Department of Bioethics encourages students to understand and respect diverse views along with exploration of their own beliefs and biases.

Leadership

Department of Bioethics aims to promote ethical professional values among health care providers so that they become better leaders in the future.



DEPARTMENT OF CLINICAL RESEARCH

Established in September 2023, the Department of Clinical Research at Shalamar Hospital is dedicated to advancing medical knowledge and improving healthcare standards through rigorous research and mentorship. Under the leadership of Professor Azra Mahmood, the department plays a pivotal role in fostering a culture of inquiry and evidence-based practice within the institution.

One of the key responsibilities of the department is providing research mentorship for both undergraduate and postgraduate students. Through hands-on guidance, researchers are equipped with the skills necessary to design, conduct, and publish research that meets international standards. The department also conducts a range of workshops covering essential topics, such as various aspects of research methodology, statistics, and clinical audits, helping participants strengthen their academic and clinical capabilities.

The department is actively engaged in conducting clinical audits aimed at improving hospital standards. These include vital areas like oxygen prescription, antibiotic use, deep vein thrombosis (DVT) prevention, and blood pressure monitoring. By consistently evaluating and refining these practices, the department ensures that Shalamar Hospital remains at the forefront of patient care and safety. A significant initiative of the department is the creation of a Research Advisory Committee in collaboration with other departments, which serves as a common platform for promoting research activities across the hospital and its affiliated medical college.

In addition to its research and mentorship activities, the department is involved in running specialized hypertension clinic that provides comprehensive care for patients with high blood pressure. The department's research portfolio spans a wide range of topics, from the application of artificial intelligence in healthcare to the impacts of climate change & hypertension. Other areas of focus include medical education and improving clinical practices, ensuring that the department's work has far-reaching benefits for both patients and the broader medical community.



DEPARTMENT OF ENGLISH LINGUISTICS AND COMMUNICATION

The Department of English Linguistics and Communication at Shalamar Institute of Health Sciences is committed to fostering excellence in academic, clinical, and professional communication. With a student-centered approach, the department prioritizes the development of essential communication skills tailored to the unique demands of the healthcare environment in SMDC, SNC and SSAHS. Leveraging state-of-the-art AI-integrated teaching methods, we offer comprehensive training in academic writing, verbal and non-verbal communication, and interpersonal interaction. Our curriculum includes hands-on workshops, seminars, personalized sessions on CV writing, Cover letter development, interview preparation, Research Articles Writing, Research Proposals and IELTS/OET preparation for PLAB and USMLE all designed to enhance both professional competence and personal growth. In addition, we engage in continuous curriculum innovation to align with students' evolving needs and professional standards, while also offering specialized faculty training programs to ensure pedagogical excellence and relevance in the field of medical profession.



DEPARTMENT OF COMMUNITY HEALTH SCIENCES

Community Medicine is a broad-based specialist branch of medical science and is defined as “a science and art of promoting health, preventing diseases and prolonging life by a range of interventions (promotive, preventive, curative, rehabilitative and palliative) in close partnerships or association with health care delivery systems and with active community participation and intersectoral coordination.” The primary objectives of Community Medicine are to prevent diseases before they occur, promote the health and well-being of the population, and safeguard the community as a whole. Community Medicine focuses on the determinants of health, local health issues, community-oriented primary health care, and the organization of healthcare services to attain the optimal quality of health. The practice of Community Medicine requires a multidisciplinary approach. The core subjects in Community Medicine are epidemiology, basic clinical sciences, and the healthcare delivery system including primary healthcare. Biostatistics, public health nutrition,

demography, social, behavioral, environmental, occupational, and management sciences are other critical areas within the discipline of Community Medicine. The knowledge and expertise in any of the aforementioned areas can be applied to any setting – be it a community, a workplace, an organization, or a country.

The Department of Community Medicine at SMDC enables undergraduate students to comprehend the disease not only in human beings but also in its dynamics in the community. The subject of community medicine is taught in line with the Pakistan Medical & Dental Council (PM&DC) and the University of Health Sciences (UHS) curricular requirements. The teaching is comprised of the following elements:

- 1. Lectures** - covering the theoretical aspects of the syllabus.
 - 2. OSPE** - covering the applied aspects of the syllabus in the form of PowerPoint images and Community Medicine Museum Models.
 - 3. Practical Research Skills** - comprising of teaching core research methods, developing research projects and presenting the work, critically reviewing published literature, and presenting their assessments during the Journal Club sessions.
 - 4. Community / Household Surveys** - after the necessary IRB approvals, the students undertake data collection, compilation, and analysis and write their survey reports.
 - 5. Newspaper / Press Clipping** - these are meant to keep the students up-to-date on important public health matters.
 - 6. Community Visits / Field Visits** - under the supervision of faculty members, the students visit various community-based organizations, and centers to understand their contributions and services in the context of the wider healthcare system and recognize the role of determinants of health in communities.
- Formative and summative evaluation of the students is undertaken in line with the standards established by the UHS. The end product is a well-rounded student who can apply their knowledge and skills for the betterment of their communities and the health systems.

The department maintains an active research agenda and takes pride in publishing scores of original research articles in indexed health journals since its inception. Well-experienced departmental faculty members have been involved in delivering continued medical education in the fields of health research methodologies and biostatistics. The faculty members actively participate in and conduct workshops on medical education to impart the emerging theories of student learning. The departmental faculty also regularly participates in coordinating co-curricular activities like dramatics, indoor games, and athletics with the rest of the college faculty.



DEPARTMENT OF FORENSIC MEDICINE & TOXICOLOGY

Forensic medicine and toxicology is an important and integral part of medical education and is practiced at the interface with law.

A medical graduate is supposed to apply his knowledge of medicine and ethics to solve different civil and criminal issues in liaison with law enforcement agencies. A doctor serving in a public sector hospital may be required to do a medico-legal examination of the living and perform an autopsy of the dead relating to common offenses. These medical examinations are required by law for dispensing justice.

The subject of forensic medicine and toxicology is taught in the 3rd year of MBBS. Because of its distinct nature, various effective educational strategies are employed to teach the subject. The department has a forensic medicine museum, tutorial, and demonstration rooms. The extensively housed forensic museum encompasses weapons of assault, models, charts, toxicological specimens, and different radiographs covering the spectrum of medico-legal aspects essential for undergraduate students.

The department has a well-equipped laboratory aimed to keep the students abreast with the latest techniques used in forensic science. For clinical exposure, students visit the forensic medicine department of King Edward Medical University and enhance their skills to apply the subject clinically.

Under the astute leadership of the Head of the Department, the faculty of the department focuses on inculcating a sense of moral responsibility within the students and ensures they are trained to reflect the standards of excellence set at the institution. The department is also recognized for FCPS training by CPSP.



DEPARTMENT OF MEDICAL EDUCATION

The mission of the Department of Medical Education (DME) is to "Enhance the Quality of Medical Education." The DME is dedicated to advancing practices that align with emerging pedagogical techniques, thereby enriching and elevating the educational experience for medical students. The department is actively engaged in research, teaching, and providing educational support, particularly in curriculum development and assessment. DME prioritizes the following key areas to foster a robust learning environment for students:

Curriculum Development and Modification

The Department plays a pivotal role in crafting a curriculum that promotes interdisciplinary teaching in medicine at SMDC.

Learning Management System (Moodle)

DME manages the Learning Management Software (Moodle), ensuring a secure platform for both teaching and assessment. A wealth of resources, including presentations, courses, and video links, is available for students to access on their devices from anywhere.

Skills Lab

DME oversees the Skills Lab at SMDC, which is equipped with mannequins and basic life support models for simulations. The primary aim is to enhance the clinical skills of medical students before they engage with real patients.

Faculty Development

DME regularly conducts workshops aimed at the personal and professional growth of faculty members, focusing on teaching methods, assessment strategies, leadership, professionalism, and communication skills.

Problem-Based Learning

Problem-based learning is a student-centred approach designed to prepare students for success in their academic, personal, and professional lives. It encourages students to take responsibility for their own learning while fostering teamwork, critical thinking, communication, and leadership skills. DME is committed to incorporating this methodology into the curriculum development process.

Mentorship Program

The mentorship program at SMDC bridges the gap between faculty and students, offering guidance on career development, improving academic performance, and addressing any concerns or issues raised by students.

Assessment Cell

SMDC is committed to providing students with accurate and fair assessments. To achieve this, the Assessment Cell was established to standardize examinations. Equipped with an Optical Mark Reader (OMR), the cell improves the efficiency of result processing and analyzes outcomes to enhance the assessment process further.

Course Evaluation

Continuous improvement is essential for the institution's growth and development. DME conducts regular online anonymous faculty evaluations by students, which help identify areas for enhancement. Recently, a SWOT analysis was carried out to identify gaps in teaching, learning, curriculum, and assessment.

Career Advising

DME offers career guidance, including workshops and one-on-one meetings, to support students in their career development and preparation for international exams such as the USMLE and PLAB.

Professionalism, Ethics, Research & Leadership Skills-PERLs

DME is actively involved in teaching PERLs which is a comprehensive program designed to instill key values in undergraduate medical students, focusing on professionalism, ethical behavior, research acumen, and leadership abilities. The program provides students with the necessary tools to navigate the complexities of the medical field, emphasizing the importance of ethical decision-making, scholarly inquiry, and leadership in both clinical and academic settings. Through interactive sessions, case studies, and mentorship, PERLs aims to prepare students to become well-rounded professionals who can contribute positively to the healthcare community.

Research

DME collaborates with faculty from both basic and clinical sciences to establish a research platform at Shalamar Medical and Dental College, enabling students to engage with research from the early stages of their medical education.

Quality Assurance in Medical Education

A Quality Assurance Committee, led by the Head of DME, has been established to oversee the quality of teaching, learning, and assessment. The committee is responsible for planning and implementing strategies to continually enhance the quality of medical education.



DEPARTMENT OF PATHOLOGY

The mission of the Pathology Department at SMDC is to excel in teaching, patient services, academic activities, and research. Department strives to impart high standards of ethical values to student, post graduate trainees, and laboratory staff for exemplary professional conduct and empathy towards patients. Department emphasizes the concept of "patients first" and makes an effort to organize laboratory services in a patient-centred manner. Department educate students to be responsible citizens of the world and teach them the link between disease prevention and improvements in environmental and food standards.

The academic functions of Pathology Department involve teaching students of SMDC, Shalamar School of Allied Health Sciences (SSAHS), and Shalamar Nursing College (SNC). SMDC houses a gross pathology museum, student pathology laboratories, and a state-of-the-art medical library, all of which support the educational activities of the students. The discipline is recognized for Postgraduate training as M. Phil & FCPS. The diverse faculty and laboratory staff are trained with recognized degrees including Ph.D, FCPS and M. Phil. These highly-trained and experienced faculty members specialize in various subspecialties of pathology and carry on the mission of the department with dedication.

Pathology is an integrative discipline encompassing multidisciplinary study at molecular, genetic, and sub-cellular levels, and thus may involve obtaining body tissues, body fluid, and/or blood samples for analysis. Pathological studies aim at understanding how and why diseases develop, their signs and symptoms, and the complications of specific diseases. The ultimate objective is to improve the management of these diseases in the clinical setting, to enable and guide treating physicians and surgeons to deliver the best possible healthcare to patients. The pathology laboratory located at Shalamar Hospital provides clinical service to inpatients, outpatient clinics, and the community. The hospital laboratory is upgraded and equipped with modern/ automated medical equipment in the sections of histopathology, chemical pathology (including special chemistry and immunology), hematology & blood bank, microbiology, and molecular biology.



DEPARTMENT OF PHARMACOLOGY

Pharmacology is the science of drugs including their origins, composition, actions, therapeutic benefits, and potential toxic effects. It forms the foundation of modern medicine and continues to play a vital role in discovering and developing life-saving treatments.

The department of Pharmacology at Shalamar Medical and Dental College (SMDC), is dedicated to providing high-quality education to undergraduate students across Medicine, Allied Health Sciences, and Nursing. With a strong emphasis on hands-on learning and critical thinking, the department fosters a culture of inquiry, research, and innovation.

Our dynamic team includes highly qualified faculty, enthusiastic graduate students, and skilled technical staff. Together, they create an academic environment that inspires curiosity, encourages collaboration, and promotes excellence in pharmacological education and research.

The department is equipped with state-of-the-art facilities, including three advanced digital data acquisition systems used for live tissue experimentation to supporting both teaching and research initiatives. An on-site animal house further enhances learning by allowing controlled pharmacological experiments under ethical guidelines.

We are proud to be recognized by the University of Health Sciences (UHS) as a certified center for M.Phil training in Pharmacology. This endorsement reflects our commitment to academic rigor, research quality, and professional development. In partnership with the Department of Medical Education, we actively contribute to the design and implementation of an integrated, student-centered curriculum that prepares graduates to meet the evolving challenges of healthcare. Recently the department has been accredited for FCPS Pharmacology by College of Physicians and Surgeons Pakistan and the training program has started.



DEPARTMENT OF PHYSIOLOGY

Department of Physiology is dedicated to understanding the intricate mechanisms of the human body and how it maintains homeostasis. The physiology course offers a comprehensive exploration of bodily functions from cellular to systemic levels, emphasizing the integration of theoretical knowledge with practical application.

Physiology is taught in the first two years of the MBBS and is integrated with subjects of Anatomy, Biochemistry, Medicine, Surgery, Eye, ENT, and Community Medicine. Physiology is taught by well-experienced faculty, trained to build a solid preliminary base of medicine in the students as they progress in their learning over the years at the institution. The department teaches undergraduate students of MBBS, Allied Health Sciences, and post-graduate students of FCPS (Physiology) utilizing modern teaching techniques to conduct lectures, tutorials, interactive sessions, problem-based learning, presentations, and case-based discussions. SeLMS, webinars, and Zoom sessions are also used for online physiology teaching.

The Physiology department has a state-of-the-art laboratory equipped with the latest gadgets, apparatus, and instruments, including Power Lab, Sirolab, and hematological analyzer. This enables students to conduct experiments in an environment comparable to any leading medical institution in the region.

The department is committed to developing a passion for research in students and this commitment can be seen in the establishment of the research lab and students' participation in national and international conferences.

With state-of-the-art laboratories and a commitment to research and innovation, we prepare students to excel in clinical practice and contribute to advancements in medical science. Faculty of Physiology, renowned for their expertise and research contributions, provide a stimulating learning environment that fosters critical thinking and a deep appreciation of the physiological processes that underpin health and disease.



DEPARTMENT OF RESEARCH & INNOVATION

Department of Research & Innovation is the driving force behind SIHS commitment towards advancing knowledge in biomedical sciences.

Our overarching goal is to conduct, support as well as promote high quality research within the SIHS ecosystem. Our mission is to enhance the laboratory research capabilities and output of our faculty, staff and students, and create a collaborative "no boundaries" environment that promotes sharing, generation and pursuit of innovative ideas. Recognizing that most significant advancements often occur at the junctures of legacy areas, we encourage interdisciplinary collaborations between different entities, and facilitate transformation of emerging ideas into grant proposals.

The Research & Innovation Laboratory contains all the essential equipment items that are required for carrying out routine biochemical and molecular biology experiments. It's modular, state-of-the-art infrastructure also includes a biosafety level-2 (BSL-2) facility that is required for studying infectious agents(e.g., bacteria, viruses, parasites) which are moderately hazardous to humans. The laboratory is not just a research hub but is also used for providing hands-on training to faculty, staff and students as and when needed.

A core team of highly competent research associates have been hired to work on different research projects as well as for trainings.

Thus, besides carrying out basic and applied research in various areas the Department is laser-focused on developing the next generation of researchers and innovators through training programs, workshops as well as mentorship.



DEPARTMENT OF ANAESTHESIA

Anesthesia is a state of controlled, temporary loss of sensation or awareness that is induced for medical purposes which would otherwise be painful and complicated.

The goal of the Anaesthesia department at SMDC is to ensure patient safety and follow a patient-centric philosophy of compassionate and dedicated care. This vision is instilled in both the undergraduate and post-graduate students who train under the competent faculty of the department.

This department provides clinical services to all surgical specialties, obstetrics, Gastroenterology, and critical care areas as well as acute and chronic pain management including epidural services during labor. There is 8 bedded Surgical ICU being run by the Anaesthesia Department for the management of critically ill surgical patients. The team's multidisciplinary approach to chronic pain and interventional pain management allows effective care.

The team takes pride in its approach to teaching which combines practical training with academic learning and research. This approach has shown exceptional results and more than 35 physicians have completed their post-graduate training and are now placed in top-tier institutes locally and inter-nationally creating a name for themselves and the institution. Currently, 15 physicians are completing their post-graduate program based on competency-based teaching and training.

The Anaesthesia department of Shalamar Medical & Dental College is fully recognized by the College of Physicians and Surgeons Pakistan (CPSP) for post graduate training.



DEPARTMENT OF BURNS & PLASTIC SURGERY

Plastic Surgery is a surgical specialty that is dedicated to the reconstruction of facial and body defects due to birth disorders, trauma, burns, and disease as well as for cosmetic effects.

The Burns & Plastic Surgery department began its journey with 10 bedded Child Reconstructive Surgery and Research Centre (CRSRC) in collaboration with the House of Charity, an American non-profit organization. It was founded to help impoverished children to receive quality medical care. To meet the growing needs of patients requiring critical care, it was revamped and upgraded in 2017 and renamed as the Hashmat Effendi Burn & Plastic Surgery department.

The department offers reconstructive, cosmetic, hand, microsurgical, and complex craniofacial surgeries with special emphasis on paediatric burn care. The unit features a 4 bed Burn Intensive Care Unit with ventilators and an isolation room. The Burns ICU caters to paediatric patients with major burns. The department also has an 11 bedded general ward in addition to dedicated plastic surgery operating rooms, procedure/dressing room, tub/hydro therapy room, physical and occupational therapy room, child life & clothing room, counselling room, outpatient clinic, medical photography section, and a healing garden.

The department functions on the principles of compassion with empathy as it serve individuals suffering from physical defects, birth disorders, and burns. The medical students are trained in burn injuries including rules for its estimation and basic burn reconstruction. As part of the general surgery curriculum, Students are introduced to the fundamentals of reconstructive and plastic surgery, including the basic principles. Additionally, they receive knowledge about paediatric cleft surgery during their final year of medical school. Electives are offered to final-year medical students to introduce them to plastic surgery as part of surgery rotation. Also, the rotation has been offered to 3rd and 4th-year medical students giving plastic surgery as a taster for their future careers.



DEPARTMENT OF CARDIOLOGY & CARDIOVASCULAR SURGERY

Cardiovascular diseases and Cardiology is a branch of medicine for conditions affecting the heart and blood vessels.

The Department of Cardiovascular Diseases has garnered a reputation for exemplary services and treatment in a short time. Equipped with state-of-the-art technology, coronary angiography lab, operation theatres, cardiac emergency, and outpatient clinics along with an independent 15-bedded Coronary Care Unit (CCU) and a 10 bedded Rasheeda Begum Cardiac Centre (RBCC), allows the department to offer an extensive range of cardiac services. Highly trained and compassionate cardiologists and cardiac surgeons deliver cutting-edge preventive, diagnostic, and therapeutic services to patients with coronary artery disease, valvular heart disease, arrhythmia, heart failure, and peripheral vascular disease.

The department offers 24-hour emergency cardiac services including round-the-clock coronary angiography and angioplasty for patients with heart attacks. Thousands of routine non-invasive procedures including ECG, transthoracic and trans-esophageal echocardiography, cardiac stress testing, 24-hour Holter, and ambulatory blood pressure monitoring is done each year. Similarly, a large number of invasive procedures including coronary angiography, angioplasty, pacemaker insertions, and peripheral angiography and angioplasty are performed. The cardiac surgical unit performs coronary artery bypass grafting (CABG), heart valve surgery, and vascular procedures including hemodialysis fistula for hundreds of patients each year.

In addition to clinical services, the department is an excellent educational resource for medical students, house officers, and postgraduate trainees. The department has taken the leading step to teach cardiovascular diseases to medical students from the very beginning of their career, initially incorporated in basic sciences and later on cardiovascular disease pathology and patients' management during clinical rotation from 3rd year onward. Medical students also benefit from Basic Life Support (BSL) and Advanced Cardiac Life Support (ACLS) courses; ECG and Echocardiographic workshops. During CCU clinical rotations, medical students also get exposed to cardiovascular procedures in Cath Lab such as coronary angiography, and angioplasty. The comprehensive training ensures that a student has a thorough understanding of cardiovascular diseases.

The cardiovascular department is continuously developing novel plans for the expansion of patient care, excellence in teaching, and training of future physicians and cardiologists and research. The goal is to continue hard work to grow the department to loftier heights in the coming years.



DEPARTMENT OF DERMATOLOGY

Dermatology is the branch of medicine which deals with the diagnosis, prevention, and management of diseases of the skin, hair, and nails. These could be diseases primarily involving the skin or cutaneous manifestations of other systemic diseases.

The Department of Dermatology was set up to treat basic skin diseases and now it comprises full fledged teaching faculty including an Associate Professor who is working as HOD and two Senior Registrars.

The facility offers clinical services and various therapeutic, diagnostic and aesthetic services under its umbrella. These include cryotherapy, cauterization, phototherapy along with diagnostic tests like fungal scraping, and skin biopsies. Among aesthetic procedures, hair removal laser with both NdYAG and DIODE lasers, treatment of scars, facial wrinkles, and fine lines with CO2 Fractional Laser, Q-Switch NdYAG Laser for pigmentation, birthmarks, and rejuvenation of the face and HIFU for skin tightening and lifting is being performed regularly with excellent results. Microneedling face with PRP for acne scars and skin rejuvenation and PRP scalp for growth of scalp hair is also being performed.

The undergraduate students of SMDC are trained in diagnosing and treatment of skin, hair, and nail disorders. Students benefit from the exposure they gain from almost 200-250 patients visiting the outpatient department daily as well as from regular rounds on inpatient dermatologic patients. This allows the students to see a variety of patients suffering from different skin diseases and learn how to effectively diagnose and manage them.

The objective of the department of Dermatology is to impart clinical training to both post-graduate and undergraduate students in a manner that increases their dermatological knowledge and creates avenues for critical thinking through academic rounds, seminars, and workshops held at the department.

The dermatology department is fully recognized by the College of Physicians and Surgeons Pakistan (CPSP) since 2015 for the Fellowship (FCPS) training in dermatology.



DEPARTMENT OF GENERAL SURGERY

The Department of General Surgery at Shalamar Medical and Dental College (SMDC) and Shalamar Hospital is a cornerstone of surgical education and patient care. It provides comprehensive training to both undergraduate and postgraduate students, integrating foundational medical knowledge with hands-on clinical and procedural skills.

Undergraduate medical students are mentored by a team of dedicated and experienced faculty who methodically introduce surgical concepts and interventions through a structured, blended curriculum. This includes active use of teaching modalities such as Objective Structured Clinical Examinations (OSCEs), Multiple Choice Questions (MCQs), and Short Answer Questions (SAQs). Student progress is tracked through logbooks, which document clinical exposure and skill acquisition during each rotation and contribute to overall evaluation.

The department places strong emphasis not only on surgical competence but also on fostering empathy, communication skills, and clinical reasoning—producing graduates who are technically skilled and humanistic in their approach to patient care.

Our Operation Theater Complex comprises nine state-of-the-art operating rooms, where a wide range of major and minor procedures are performed by exceptionally skilled surgeons. The department continues to evolve, offering advanced and innovative surgical services including Endocrine Surgery, Oncological Surgery, and Bariatric Surgery, positioning itself as a leader in these domains nationally.

The Department of Surgery is recognized by the College of Physicians and Surgeons Pakistan (CPSP) for postgraduate training in General Surgery, a testament to its academic excellence and clinical credibility.

In recent years, the department has significantly expanded its footprint by developing specialized units in Hepatobiliary Surgery, Colorectal Surgery, Breast Surgery, Oral & Maxillofacial Surgery, and Thoracic Surgery. These additions enhance both the breadth of patient care and the scope of clinical training, providing students and residents with exposure to diverse subspecialties under the guidance of national and international experts.



DEPARTMENT OF MEDICINE

The Department of Medicine serves as the cornerstone of clinical training at Shalamar Medical & Dental College. It represents the practical integration of all basic sciences—anatomy, physiology, biochemistry, pathology, forensic medicine, and community health sciences—studied during the early years of the MBBS program. Building on this solid foundation, the department guides students in translating their theoretical knowledge into clinical competence.

From the third year onward, students are immersed in patient-centered learning. They are taught how to take comprehensive medical histories, perform systematic physical examinations, interpret laboratory and imaging studies, and formulate appropriate treatment plans. This hands-on clinical exposure spans all academic years, ensuring progressive development of diagnostic and therapeutic skills.

Students are actively involved in the observation and understanding of essential medical procedures such as gastrointestinal endoscopies, bronchoscopies, echocardiography, hemodialysis, mechanical ventilation, lumbar punctures, pleural and peritoneal aspirations, and organ biopsies. This exposure to real-world medicine enhances their procedural understanding and clinical acumen.

The department encompasses General Medicine and a wide array of subspecialties including Cardiology, Pulmonology, Gastroenterology, Neurology, Nephrology, Endocrinology, Rheumatology, Dermatology, Psychiatry, and Hematology/Oncology. Each unit is led by experienced faculty committed to excellence in patient care, teaching, and mentorship.

One of the unique strengths of the department is its emphasis on bridging the gap between knowledge and practice. Students are encouraged to participate in bedside discussions, case presentations, and academic forums. Furthermore, the department nurtures a culture of inquiry and critical thinking by involving students in supervised research projects. This early introduction to research enhances analytical skills and lays the groundwork for academic medicine.

Medical students are continuously assessed using a variety of tools including multiple-choice questions (MCQs), structured viva voce, short and long clinical cases, and Objective Structured Clinical Examinations (OSCEs). These evaluations ensure that students are clinically sound, ethically grounded, and prepared for higher training.

The Department of Medicine at SMDC is fully accredited by the College of Physicians and Surgeons Pakistan (CPSP) for FCPS training, offering postgraduate opportunities in a supportive and academically vibrant environment. For aspiring medical students, joining the Department of Medicine at Shalamar Medical & Dental College means becoming part of a legacy of clinical excellence, compassionate care, and a commitment to lifelong learning.



DEPARTMENT OF OBSTETRICS & GYNAECOLOGY

The branch of medicine specializes in the care of women during pregnancy and childbirth and the diagnosis and treatment of diseases of the female reproductive organs.

The Department of Obstetrics and Gynecology has grown to encompass multiple sub-specialties. The department handles more than 3000 deliveries each year which highlights the department's strength and potential to handle such huge numbers.

Medical students are immersed in hands-on training along with academic studies on the subject by the highly experienced faculty exposing them to the functioning of the department, procedural training, and an understanding of this branch of science.

The department conducts structured teaching and training for undergraduate medical students as well as postgraduate students. This includes regular tutorials, case presentations, and journal club meetings. Perinatal and maternal morbidity and mortality meetings being held every month.

The Department is equipped for the care of low-risk and high-risk Obstetrics and Gynecological patients and has all the essential amenities, equipment, and apparatus. There is an outpatient department with a facility for antenatal and postnatal care, ultrasound, colposcopy, vaccination, neonatal examination, family planning, and infertility management. Sub-specialty clinics are also functional which include an urogynecology clinic, infertility clinic, fetomaternal medicine, menopause clinic, and a gynecologic oncology clinic with plans to establish a menopause clinic and in-vitro fertilization unit.

The Gynaecology department's operation theatre is fully equipped to carry out emergency, conventional, laparoscopic/endoscopic surgeries. A recent addition is an endoscopy unit which is now functional. The facility has separate rooms for resuscitation and observation for newborns, epidural, ultra sound, eclampsia, and procedure rooms.

The competency of the faculty can be evaluated by the research studies published in world-renowned indexed journals including The Lancet s, highlighting the academic strength of the team. All faculty members have been certified for the Advanced Trauma Life Support (ATLS) and Advanced Life Support in Obstetrics (ALSO) programs conducted by the College of Physicians and Surgeons of Pakistan (CPSP).



DEPARTMENT OF OPHTHALMOLOGY

Ophthalmology is a branch of medicine and surgery that deals with the diagnosis and treatment of eye disorders.

For more than 20 years, The Department of Ophthalmology has been treating patients from all walks of life. We continue to persistently modernize with new techniques and procedures. This has resulted in a facility that provides advanced level care for patients with eye diseases. We simultaneously train and teach the next generation of undergraduate, postgraduate, and allied vision science students. We are fortunate to have highly experienced faculty with both local and international training.

Students directly interact, under supervision, with a large number of patients having a diversity of ophthalmic diseases. They learn about diagnosis and medical management of these eye diseases. Step-wise knowledge acquisition is encouraged with initial emphasis on theory followed by observation of various procedures. Faculty may then allow students to assist them in minor procedures. This hands-on, supervised experience allows students to evaluate, investigate, treat, or refer the patient to the appropriate specialist.

The department is equipped with the latest diagnostic and therapeutic equipment. This enhances the ability of the unit to expertly diagnose and treat diseases with maximal precision. The resources available at the department allow for academic learning which is at par with international standards. These techniques include lectures, discussions, seminars, simulated learning on mannequin models and conferences. The students are encouraged to develop critical thinking, use resources judiciously and be active in research in collaboration with the staff.

The Department of Ophthalmology is also recognized for post-graduate training by the College of Physicians and Surgeons Pakistan (CPSP).



DEPARTMENT OF ORTHOPEDICS

Orthopedics is the branch of medicine concerned with the musculoskeletal system and treating injuries of bones, joints, ligaments, or tendons.

The department currently offers tertiary level clinical services, which include management of acute and neglected trauma, adult reconstruction surgeries including joint replacement surgery, arthroscopic surgery of the shoulder, hip, and knee joints as well as Pediatrics Orthopaedics. The department maintains the highest standards of preoperative, perioperative, and postoperative orthopedic care and continuously seeks advances in surgery and diagnostics.

The well-qualified and experienced faculty of orthopedics is supplemented by state-of-the-art operation theatres and the latest equipment to perform complicated surgical procedures. This combination of technical expertise backed by technology offers medical students a rare insight into the field exposing them to a variety of orthopedic cases ranging from minor ailments to complicated surgeries.

The students are tutored in the subject throughout the five years of their education via integration with basic science subjects and later through clinical rotations in the department. During the rotation, students are trained through tutorials, clinical examinations, and presentations. Orthopedic cases of clinical interest are discussed in the CME programs. The students are also exposed to pre-operative planning of surgical cases giving them an introduction and basic understanding of the subject. The team aims to be recognized as a leader in innovation and to become a center of excellence in the field of healthcare services, training, and clinical research. The department of Orthopaedics is recognized by The College of Physicians and Surgeons Pakistan (CPSP) for the training of Fellows of the College of Physicians & Surgeons (FCPS).



DEPARTMENT OF OTORHINOLARYNGOLOGY (ENT)

Otorhinolaryngology is a surgical subspecialty that deals with conditions of the ear, nose, and throat and related structures of the head and neck.

The field is an integral part of learning for undergraduates as during their clinical practice the graduates will see numerous cases of patients dealing with the nose, ear, and throat issues. The Department of Otorhinolaryngology (ENT) has become synonymous with utilizing cutting-edge technology and instrumentation to ensure precision and accuracy.

The faculty is focused on effective training of students on how to evaluate, investigate and treat these issues. The department provides an excellent opportunity for undergraduate students to acquire hands-on psychomotor and clinical skills in this specialty. The Audiology section of the department is well-equipped to provide facilities for hearing evaluation and vestibular testing through pure tone audiometry, play audiometry, and tympanometry. The ample patient base provides students an opportunity to interact with patients directly, allowing them recognize diseases and manage and treat these ailments while communicating with the patients about future prevention and care.

Taught in the 3rd and 4th year of MBBS, Otorhinolaryngology focuses on grasping the basics of patient evaluation and management and gradually being exposed to complicated head and neck surgery techniques. The faculty is highly trained offering services from minor issues to major surgical procedures of the head and neck. The Department of Otorhinolaryngology (ENT) is also recognized by the College of Physicians and Surgeons Pakistan (CPSP) for post-graduate training.



DEPARTMENT OF PAEDIATRICS

Pediatrics is the branch of medicine that deals with the health and medical care of infants, children, and adolescents from birth up to the age of 18. The Department of Pediatrics at SMDC is fully equipped to impart clinical training and learning to the medical students of the institution. The department not only aims to train the students to understand the complexity of physical ailments but also to invigorate the spirit of compassion among the students so that they can also deal with the emotional needs of the child and their families.

With a focus on hands-on training, the Pediatrics Unit of Shalamar Hospital, is furnished with a purpose-built neonatal nursery, children's ward, outpatient departments, vaccination center, well-baby clinic, pediatric ER, and pediatric intensive care unit.

The department of Pediatrics at Shalamar Hospital consists of highly qualified faculty which incorporates educational activities like bedside training, case-based learning, clinical conferences, and peri natal mortality and morbidity meetings to ensure that the students excel in their training as they become a part of the medical profession and serve their patients.

The pediatrics department is recognized by the College of Physicians and Surgeons Pakistan (CPSP) for the training of MCPS & FCPS. The department has also conducted workshops in collaboration with the University of Birmingham, UK.

The Department is also recognized by the Royal College of Paediatrics and Child Health (RCPCH) of the United Kingdom for MRCPCH training which is a testament to the pediatric department's quality of training and education.



DEPARTMENT OF PSYCHIATRY & BEHAVIORAL SCIENCES

The Department of Psychiatry and Behavioural Sciences at Shalamar represents a dynamic and vital branch of medicine dedicated to understanding human thought, emotion, and behaviour. It addresses the prevention, diagnosis, and treatment of mental health conditions through a compassionate, ethical, and evidence-based approach.

Since 1996, Shalamar Hospital has been actively engaged in raising mental health awareness and providing accessible psychiatric care. The department continues this legacy by offering expert services through counselling, psychotherapy, behavioural interventions, and medication management, all aligned with international standards. In addition to outpatient care, the department also provides indoor admission and management for patients requiring more intensive psychiatric treatment in a safe and structured environment.

Psychiatry is integrated throughout the five years of the MBBS program. Students are introduced early to behavioural sciences and continue to build their understanding through clinical exposure and academic training. The goal is to ensure they graduate not only as skilled physicians but also as empathetic communicators who can identify and manage psychological concerns alongside physical illnesses.

The academic program includes lectures, small group discussions, tutorials, and a dedicated clinical rotation. Students gain meaningful exposure to real-life cases and develop the ability to approach patients with insight, patience, and compassion.

Outpatient psychiatric services run six days a week, both in the morning and evening, making mental healthcare accessible to the wider community. The department also provides confidential student counselling services, offering support and guidance throughout the course of study.

Beyond academics, the department is deeply committed to the personal growth and well-being of students. Faculty members serve not only as teachers but also as mentors providing encouragement, career guidance, and emotional support to help students navigate the challenges of medical training with resilience and confidence.

The department invites students to engage with a field that is intellectually rewarding and deeply human. At Shalamar, psychiatry is not just a subject, it is a calling to understand the person behind the patient.



DEPARTMENT OF RADIOLOGY

Radiology represents a branch of medicine that uses imaging in the diagnosis and treatment of disease. Radiology is a field of science that helps with the diagnosis and management of diseases in literally all fields of medicine. From the use of a simple x-ray to highly complex imaging studies, it has helped clinicians of all specialties of the medical profession to reach their diagnoses. The field of therapeutic and interventional radiology has also revolutionized the practice of medicine.

The Radiology department of Shalamar Hospital is one of the busiest units of the facility with an annual turnover of over 100,000 patients with round-the-clock services. The department is well equipped with state-of-the-art machines.

The department offers diagnostic services in Computed Radiography, Ultrasonography- 4D, Portable X-Ray/ USG, Fluoroscopy, Doppler Imaging, Computerized Tomography (CT scan), Interventional Radiology, MRI & Mammographic Imaging. The curriculum of medical students includes "system based" teaching in the first two years of their training. Basic Radiology interpretation skills are then taught in the 3rd year followed by expert imaging modalities in the corresponding year. The final year starts with specialty modules by rotations in medicine and surgery along with Radiology teaching takes place as well as ward-based teaching.

The faculty not only teaches medical students of Shalamar Medical and Dental College but is also in charge of training and teaching Medical Imaging Technology (MIT) to Allied Health Students of the institute. The department is fully recognized for FCPS.



DEPARTMENT OF UROLOGY

Urology is a branch of medicine that deals with surgical & medical diseases of the male and female urinary tract system and male reproductive organs.

Established in 1990, the department of Urology is dedicated to providing quality care to its patients. The department offers a wide range of procedures including, innovative high-end laser procedures for stones, prostate and tumors, PCNL, flexible ureteroscopy, oncological upper and lower tract surgeries, and microscopic surgery for male infertility. The department is at par with any facility in the country and has recently been upgraded with renovated operation theatres, and outpatient facilities along with the acquisition of a new laser which is the most powerful in its class. The facility is expanding to incorporate cutting-edge laser surgery for Prostate and Retrograde Intra-renal Surgery (RIRS) for kidney stones.

The well-trained faculty emphasize the need for medical students to accompany the senior consultants on the morning rounds helping them to understand the complexities of Urology and enriching the student learning experience during their clinical rotation in the department. The students are also encouraged to follow patients post-operatively. This allows for the students to have a comprehensive understanding of diseases in the area of adult and pediatric urology. The students are given opportunities to pursue research-based activities.

The department plans on expanding its training structure given its technical expertise. The department is fully recognized for FCPS.



THE OFFICE OF STUDENT AFFAIRS

The Office of Student Affairs is entrusted with all administrative matters of student during their academic term at Shalamar Medical & Dental College.

The Office of Student Affairs is committed to providing a friendly, educational, and collaborative experience for undergraduate students with faculty, academic advisors, and administrative staff. SMDC students come from all over the world with myriad cultural backgrounds, genders, and abilities. The Office of Student Affairs supports, celebrates, and embraces its students' differences.

The office also acts as a link between the student body, faculty, and the administration; coordinating activities ranging from admissions, examinations, and class schedules to extra-curricular activities and a student's physical and mental wellbeing.

The Office of Student Affairs is also responsible for the following tasks:

- Initiation and completion of the admission procedures of all the colleges' i.e. Shalamar Medical & Dental College; Shalamar Institute of Allied Health Sciences; Shalamar Nursing College
- Implementing the values, missions, and policies of SMDC
- Catering to the needs of the student body and creating an environment of collaboration
- Promote diverse campus learning communities for the student body
- Serve as a resource for faculty in their work with individual students and student groups
- Advice faculty members on issues related to students and the steps needed to be taken
- Personal and social development of students through coordination of extracurricular activities
- Create avenues for the intellectual growth of the students
- Implement policies which create a safe and secure environment for the students within the campus
- Serve as a support system for both faculty and students for the general welfare of the members of the campus which include but are not limited to academic support, counseling, housing and health services, academic recognition activities, and recreational activities.

It is highly recommended that students ensure that they are informed about their curriculum and graduation requirements.

If students have any questions or concerns, they are welcome to call or email the staff in the department. Department staff assist students with an array of services related to program of study. The office is located in the SMDC-College building ground floor.



AFFILIATED HOSPITALS

SHALAMAR HOSPITAL

Shalamar Hospital is a 500-bed tertiary care hospital that was opened in 1978. It is one of the largest and oldest hospitals in the north of Lahore. The hospital was initiated with six departments and today has grown to become a multi-disciplinary tertiary care facility. Shalamar Hospital now offers services in all clinical specialties which are backed by highly trained clinicians, nurses, and paramedic staff, specialty clinics, state-of-the-art equipment, and modernized operation theatres in an infection-free environment at par with international standards.

Around 600,000 patients from Lahore and the province of Punjab are treated every year at the hospital making it one of the busiest hospitals in the city. The ability to cope with such a large number diligently and efficiently is key to Shalamar Hospital's success. The unwavering commitment to compassionate and empathetic patient care by every team member at Shalamar Hospital is a key reason why so many patients trust us for all their healthcare needs.

The hospital offers diagnostic and therapeutic services in Anaesthesia, Burns & Plastic Surgery, Cardiology & Cardiovascular Surgery, Dermatology, Endocrinology, General Surgery, Gastroenterology, Internal Medicine, Neurology, Nephrology, Obstetrics & Gynaecology, Ophthalmology, Otorhinolaryngology (ENT), Orthopaedics, Paediatrics, Pulmonology, Psychiatry & Behavioural Sciences, Pathology, Radiology, Rheumatology, and Urology.

Shalamar Hospital has state-of-the-art operation theatres with an infection-free environment fitted with cutting-edge equipment suited for patients undergoing surgery, gynecological procedures, and cases of trauma. The hospital offers a comprehensive list of surgical procedures required for diagnostic, elective, and emergency purposes.

Shalamar Hospital is a teaching hospital affiliated with the Shalamar Medical & Dental College and provides training to undergraduate students of medicine, allied health sciences, and nursing. Additionally, Shalamar Hospital is training more than 100 postgraduate residents in the fields of Medicine, Surgery, Gynaecology and Obstetrics, Paediatrics, Orthopaedics, otorhinolaryngology (ENT), Anaesthesia, Dermatology, Ophthalmology, Cardiology, and Urology.

The facility has been recognized by the Pakistan Medical and Dental Council for House jobs since 1984 and by the College of Physicians & Surgeons for MCPS and FCPS training.

AFFILIATED HOSPITALS

FAUJI FOUNDATION HOSPITAL

Fauji Foundation Hospital is affiliated with Shalamar Medical & Dental College for the training of medical students. This is a 275-bedded facility spread over 52 Kanals with more than two hundred thousand square feet of constructed space. The facility was established to serve the healthcare needs of retired armed forces personnel and their families, who are entitled to complimentary services. Additionally, the hospital extends its services to civilians from all walks of life.

Fauji Foundation Hospital has an annual patient turnover of more than 250,000 patients who walk through the doors of the facility seeking healthcare. The facility operates via a filter clinic where every patient is examined by an experienced medical officer to be forwarded to appropriate consultants after preliminary examination, diagnoses, and investigations. This allows for increased efficacy in the treatment and results in every patient receiving care and proper management. The hospital also uses a state-of-the-art paperless MEDIX system for consultation, investigation, treatment, and record keeping of the patients.

The Fauji Foundation Hospital is registered with the Pakistan Medical and Dental Council to carry out teaching for the students of the Shalamar Medical & Dental College. The students of SMDC have clinical rotations at the facility from the 3rd year onwards which allows the students to be exposed to a diverse set of patients from two facilities.

The affiliation has not only increased the bed strength but has also increased the number of case studies for clinical practice. This helps the students to have a firmer grasp of the science of medicine and its application in a practical setting.

Fauji Foundation offers the following clinical departments/services:

- Medicine
- Surgery
- Obstetrics and Gynaecology
- Paediatrics
- Neonatal Intensive Care
- Otorhinolaryngology
- Ophthalmology
- Orthopaedics
- Anesthesiology
- Dermatology
- Pathology
- Radiology
- Immunization clinic
- Private Clinics
- Intensive Care Unit



SUCCESS STORIES



DR. IFRAH NAEEM

SMDC introduced me to excellent educators and mentors who believed in me and helped set concrete foundation. In hindsight, the career goals that the first-year-me set for her was achieved due to the strong sense of faith and perseverance that, I truly believe, came from that foundation. I feel honoured to be an alumnus of the institute that not only acknowledges the hard work of its students but also ensures instilling the confidence to achieve their dreams. While progressing through my Internal Medicine Residency training in the US, I feel a sense of gratitude accompanied by a hint of nostalgia towards SMDC, and a strong sense of belonging, as it continues to fuel my newfound aspirations and dreams.

MALIK MUHAMMAD UZAIR KHAN, MD

Shalamar played a focal role in my medical career, from my first day as a medical student to the last day of my demonstrator-ship in the Department of Anatomy, I felt wholly supported by my institute. Since 2020, I have also had the honour of being the President of the Shalamarians' Alumni Association. I have been working closely with many of our graduates currently residing in the US, UK, and Pakistan, to create a social network of our alumni to better facilitate our juniors in their future endeavours. Currently, I am working as a Resident Physician in Internal Medicine in Philadelphia, PA, USA. My future plans include initiating and implementing primary prevention strategies and programs in Pakistan so that we can identify and manage risk factors before they have an impact large enough to cause significant diseases.



Iqra Arshad

I am working as a graduate Resident in Internal medicine at Lincoln Hospital NY, USA. I have no words to describe my gratitude towards my institution. SMDC brings the best out of me and has become my recognition forever. I am truly grateful to all my professors for their guidance; for making me a good clinician and helping me to recognize my true potential.



SHINING STAR OF SMDC



Badoor Mehboob one of our brightest students from the batch of 2024 pursued medical education and became a part of our vibrant and thriving community.

Her undying determination and selfless efforts to acquire knowledge throughout her tenure, coupled with the finest support and guidance provided by the faculty her undertook the University of Health Sciences (UHS) Professional examinations competing with students of approx. 40 Medical Colleges in the region.

She secured first Position in Second Professional Examination, Third Professional Examination and Final Professional Examination 2024.

She passed General Pathology, Obstetrics & Gynaecology, Paediatrics, Pharmacology, Physiology, Special Pathology, Anatomy, Biochemistry, Forensic Medicine and Ophthalmology subjects with distinctions.

The Businessmen Hospital Trust Best Graduate 2025 Medal is the highest honour bestowed by Shalamar Medical & Dental College. The award highlights the exceptional academic potential of Dr. Badoor at the 4th Integrated Convocation.

Dr. Badoor's accomplishments exhibit her passion, dedication, and commitment to the medical profession, which allowed her to reach her true potential. It also reflects highly on the standards of education and training at Shalamar Medical & Dental College.

CODE OF CONDUCT

Any student, who fails to clear the First Professional MBBS examination in four chances, availed or un-availed after becoming eligible for such examination, shall cease to become eligible for further medical education in Pakistan.

Any student, who fails to clear the second Professional MBBS examination in four chances, availed or un-availed after becoming eligible for such examination, shall cease to become eligible for further medical education in Pakistan.

Students must secure the minimum assessment percentage required by the Pakistan Medical & Dental Council and University of Health Sciences separately in both the written and oral/practical/clinical components of the internal assessment for each subject, module, or block. Additionally, an overall aggregate prescribed by the Pakistan Medical & Dental Council and University of Health Sciences is required to qualify for the University of Health Sciences examinations. The aggregate is calculated by evaluating the cumulative performance across all assessments conducted within the respective subject during the block/module or session. No grace marks or any such increase in marks in any other manner will be permissible.

In case a student fails to pass the Professional MBBS Examination in the second annual (Supplementary) examination, his/her provisional promotion to the next higher class shall stand automatically cancelled and he/she shall revert to the previous class. All lectures and practicals etc. attended during his/ her provisional promotion shall also stand cancelled.

If a student appears in the second annual examination (Supplementary) for the first time as he/she did not appear in the first annual examination and fails in any subject in the second annual examination, he/she will not be promoted to the next class.

The Principal reserves the right to detain any student from appearing in the Professional MBBS University Examination at any stage, if in his opinion, the student is found to be short of attendance in theory or practice of any subject or his work is reported to be unsatisfactory by any Professor or if in the opinion of the Principal, the character and conduct of the student are unsatisfactory.

Academic honesty is expected of all students. Students are responsible for knowing how to maintain academic honesty and for abstaining from cheating, the appearance of cheating, and permitting or assisting in another's cheating. The college will not tolerate academic dishonesty. This zero-tolerance policy on academic dishonesty protects the integrity of the education that students receive at the college. Before appearing in the University Examination, the students will be required to produce No Dues Certificate from the College Cafeteria, College Accounts Office, College Book Shop, Library, Hostel Warden, Sports Society, Transport Contractor, and respective Basic and Clinical departments and any other department as notified. Students unable to produce the same will be liable to be detained by the Principal from appearing in the University Professional examination.

ATTENDANCE POLICY

All students are expected to attend the lectures, practicals, tutorials, demonstrations, hospital clinical wards or any other academic activity with regularity and punctuality.

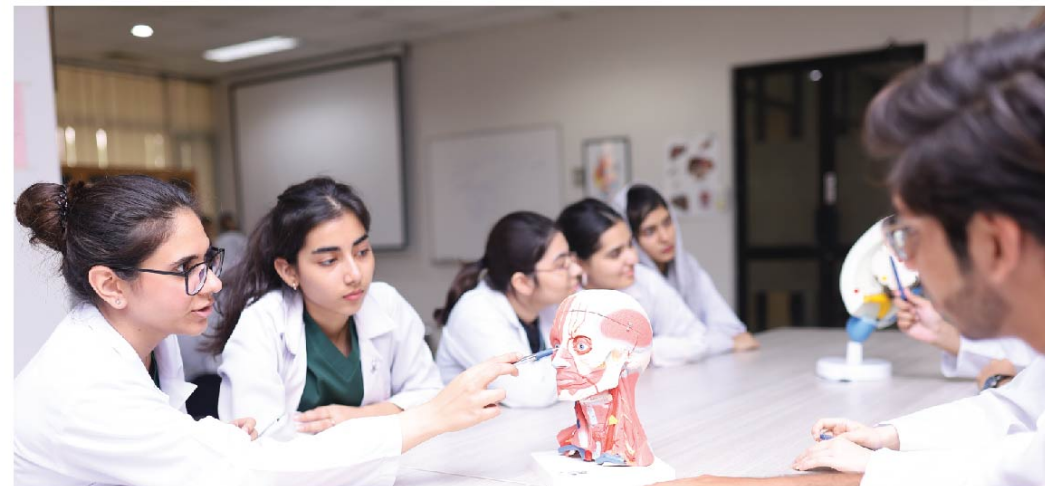
As per the Pakistan Medical & Dental Council and University of Health Sciences attendance requirements, students enrolled in the modular system must meet the minimum attendance requirement across the entire academic session including cumulative attendance for all lectures, practicals, and clinical sessions conducted during the academic year. Moreover, students must maintain the prescribed attendance threshold in each individual examination subject, block or module, mandatory for eligibility to appear in the professional examinations.

The absence in lectures, practicals, tutorials, demonstrations, clinical wards and any other academic

activity is discouraged but based on the margin available it is intended to cover those unavoidable absences, which result on account of sickness or special emergencies.

In case of an intended absence, leave should be applied by the student along with the supporting documentation for approval for consideration of any remediation of academic activities during the period of leave in compliance to the University of Health Sciences leaves policy/regulations (subject to any revision or update by the university). In all cases, leave taken will be at the student's own risk so far as the percentage of attendance is concerned and even a medical certificate will not condone any deficiency in attendance. Repeated absence from lectures, practicals, tutorials, demonstrations, and hospital clinical wards, without any justified/ cogent reasons, will make a student liable for disciplinary action as well as the risk of falling short of a minimum attendance, in each of the examination subjects/blocks/modules. The students must regularly check their attendance records from their online portal.

The students who do not meet the required attendance (as mentioned above) due to late admission or even otherwise will have to make up for their deficiencies by attending special classes during the academic breaks as per the plan/schedule notified by the concerned teaching department. The schedule of such special class will be notified by the concerned teaching department and it shall be the responsibility of the students who are short of the minimum attendance to enrol in such classes and complete the shortfall and SMDC shall not be responsible for any lapse on the part of any such student. In the case of clinical rotations, students who fail to meet the minimum attendance will have to do remedial rotations. In case of attendance between 65% and the minimum attendance required by the University of Health Sciences, half of the rotation will have to be repeated. In case the attendance is below 65%, the entire rotation will have to be repeated. Students will only be eligible to appear in the end of rotation examination if they fulfil the required attendance. Students who have not cleared all the end of rotation examinations for that particular academic session for each rotation individually will not be sent up for the ensuing university professional examination of that year. The students who fail to meet the required attendance will have to fulfil the shortage during the academic breaks.



DETAINED STUDENTS ATTENDANCE / ASSESSMENT POLICY

A detainee student will repeat the year in concerned failed block / subject with the current academic session (preceding class) for all failed & non-examination subjects. He/ She will have to complete minimum attendance/ assessment required by the Pakistan Medical & Dental Council and University of Health Sciences in the new session. The attendance and assessment for such students shall be considered from the date of the day after the declaration of the Supplementary examination's result.

Students who could not meet the requirements to appear in the annual & supplementary examination will repeat the session with minimum attendance / assessment required by the Pakistan Medical & Dental Council and University of Health Sciences. The attendance/assessment for such students shall be counted from the day after the determination of non-eligibility for the supplementary examination.

A student who could not pass the course in the annual examination and subsequently appeared in the supplementary examination shall be given credit for next year's attendance equivalent to the actual number of days of supplementary examination in which He/ She appears.

A student, not eligible to appear in the annual examination due to insufficient attendance and/ or assessment, and subsequently cleared the examination in the supplementary attempt, their next year's attendance/assessment shall be considered day after the conclusion of the supplementary examination. Attendance /Assessment of late admitted 1st-year students shall be considered from the date of their admission.

In the case of clinical rotations, students who fail to meet the minimum attendance will have to do remedial rotations. In case of attendance between 65% and the minimum attendance required by the University of Health Sciences, half of the rotation will have to be repeated. In case the attendance is below 65%, the entire rotation will have to be repeated. Students will only be eligible to appear in the end of rotation examination if they fulfil the required attendance. Students who have not cleared all the end of rotation examinations for that particular academic session for each rotation individually will not be sent up for the ensuing university professional examination of that year. The students who fail to meet the required attendance will have to fulfil the shortage during the academic breaks.

Please note: It is the responsibility of the student to keep themselves updated regarding their attendance and assessment record during study in a particular subject with the concerned department.

ASSESSMENT POLICY

Institutions have a responsibility of controlling the quality of students that graduate and become part of a profession. This becomes even more important in the medical profession as the graduates will be dealing with something as precious as human lives.

In order to ensure that each of the medical students passing out of SMDC has the necessary knowledge, skills and attitudes as a doctor and is a high-quality professional, it is imperative that quality control mechanisms are in place and remain effective.

Internal assessment of students that ensure the acquisition of necessary proficiency in the cognitive, psychomotor and affective domains is one such quality control mechanism. This also is the first line of defence; with the university examinations being the second line for ensuring that the right people enter the profession.

Internal assessment of students that ensure the acquisition of necessary proficiency in the cognitive, psychomotor and affective domains is one such quality control mechanism. This also is the first line of defense; with the university examinations being the second line for ensuring that the right people enter the profession.

Students must secure the minimum assessment percentage required by the Pakistan Medical & Dental Council and University of Health Sciences separately in both the written and oral/practical/clinical components of the internal assessment for each subject, module, or block. Additionally, an overall aggregate of prescribed by the Pakistan Medical & Dental Council and University of Health Sciences is required to qualify for the University of Health Sciences examinations. The aggregate is calculated by evaluating the cumulative performance across all assessments conducted within the respective subject during the block/module or session.

In case a student fails to maintain the required internal assessment, an opportunity for remediation may be given during the academic breaks or other such periods as feasible. In the case of clinical rotations, this shall be done during the academic breaks occurring after a clinical rotation.

However, in case of a concomitant shortage of attendance, the internal assessment will follow the mandated remedial rotation.

Students, who do not clear/pass the end of rotation examination in the first attempt, will have to appear at the end of rotation assessment with the subsequent batch or during the academic break as feasible.

Award of Grace Marks or any such increase in marks by any other manner shall not be permissible under any circumstances in any subject or examination. "A student must have minimum attendance/ assessment required by the Pakistan Medical & Dental Council and University of Health Sciences and attendance in PBL separately to be considered as eligible for taking professional examination".

Please note: It is the responsibility of the student to keep themselves updated regarding their attendance and assessment record during study in a particular subject (block/module) through their online portal and with the concerned department.

ADMISSION INFORMATION

ELIGIBLY AS PER PMDC ADMISSION REGULATIONS

- Have passed the MDCAT examination with at least 55% marks.
- Local / open merit applicants must obtain a Higher Secondary School certificate (FSc. Pre-Medical) qualification ("HSSC") or an equivalent 12th grade qualification in Pakistan (as determined by IBCC) and having obtained a minimum of sixty percent (60%) marks.
- Passed the mandatory subjects of biology and chemistry. The student may opt to qualify either physics or mathematics in the examination of the Higher Secondary School Certificate or an equivalent 12th grade qualification recognized in Pakistan:
- For foreign applicants desirous to take admission on foreign / overseas quota seat require to pass their FSc/HSSC/equivalent from outside Pakistan with mandatory subjects of biology and chemistry and physics / Mathematics.

Provided that the mandatory requirement of MDCAT shall not apply to students seeking admission on a special program seat predefined exclusively for foreign students and on the seats reserved for overseas Pakistanis. Such students shall qualify SAT-II with minimum score of 550 in each of the three subjects i.e. Biology, Chemistry and Physics / Mathematics or a foreign MCAT examination or UCAT examination with 50% marks as prescribed in PMDC Admission Regulation.

WEIGHTAGE FOR MERIT DETERMINATION

- | | |
|-------------------------|-----|
| 1. Matric or equivalent | 10% |
| 2. F. Sc. or equivalent | 40% |
| 3. MDCAT | 50% |

FEE AND OTHER DUES

PLEASE NOTE

- UHS / PMDC fee and any government taxes as applicable will be required to be paid by the student.
- College Management reserves the right to revise/change the fee in later years of studies.
- SMDC dues refund policy will be as per the policy of PMDC / UHS.
- The hostel/boardings fee has to be paid on quarterly basis (3 months) in advance.
- A fine of Rs. 500/- per day shall be charged on all kinds of fee payments after the due date

HOW TO APPLY?

Our online application system (OAS) is an essential part of how we run our admissions for the MBBS Undergraduate Program and how we will communicate with you during the admissions process. A link to the online admission system will be available on our website once the admission process starts.

ANNUAL FEE STRUCTURE ACADEMIC YEAR 2025-26 LOCAL STUDENTS

Sr. No	Fee Head	1st Year (2025-26)	2nd Year (2025-26)	3rd Year (2025-26)	4th Year (2025-26)	5th Year (2025-26)	Total
1	Admission Fee	45,882	-	-	-	-	-
2	Tuition Fee	2,294,119	2,500,590	2,725,643	2,970,951	3,238,336	
3	College Fee Total	2,340,001	2,500,590	2,725,643	2,970,951	3,238,336	13,775,521
4	UHS @5.5 % (or as applicable)	128,700	137,532	149,910	163,402	178,108	757,654
5	PMDc Registration (or as applicable)	15,000	-	-	-	-	15,000
6	UHS Registration (or as applicable)	24,000	-	-	-	-	24,000
7	Admission Registration Fee	2,000	-	-	-	-	2,000
8	Medical Treatment Student	6,000	6,540	7,129	7,770	8,469	35,908
	Total:	2,515,701	2,644,662	2,882,682	3,142,123	3,424,914	14,610,083

OPTIONAL FEE & CHARGES PKR.

Sr. No	Fee Head	1st Year (2025-26)	2nd Year (2025-26)	3rd Year (2025-26)	4th Year (2025-26)	5th Year (2025-26)
1	Hostel Rent Charges (Annual)	267,070	291,106	317,306	345,863	376,991
2	Hostel Rent Charges (Monthly)	22,256	24,259	26,442	28,822	31,416
3	Transport Charges:	As per actual.				
4	Food Charges (Hostel Residents):	As per actual.				

Note:

- An amount of Rs. 50,000/- will require to be deposited as refundable Hostel Security in case of availing the Hostel facility.
- Fee structure will be reviewed if the official / documented inflation goes above 12 %.
- Section 9 (3) of Medical and Dental Undergraduate Education (Admissions, Curriculum and Conduct) Policy and Regulations, 2023 provides as under:

"9(3) A student shall have the right to pay the tuition fee on a quarterly, six monthly or annual basis to the college. A Student paying the college on a six monthly basis in advance shall be granted a two per cent discount in the tuition fee and a student paying the college on an annual basis in advance shall be granted a four percent discount in the tuition fee"

ANNUAL FEE STRUCTURE ACADEMIC YEAR 2025-26 FOREIGN STUDENTS

Sr. No	Fee Head	1st Year (2025-26)	2nd Year (2025-26)	3rd Year (2025-26)	4th Year (2025-26)	5th Year (2025-26)	Total
1	Admission Fee (2% of Tuition Fee) in US \$	300	-	-	-	-	-
2	Tuition Fee in US \$	15,000	16,350	17,822	19,425	21,174	-
3	College Fee in US \$ (Admission Fee + Tuition Fee)	15,300	16,350	17,822	19,425	21,174	90,071
4	UHS @5.5 % (or as applicable) in US \$	842	899	980	1,068	1,165	4,954
	Total College Fee in US \$.	16,142	17,249	18,802	20,494	22,338	95,025

OTHER CHARGES IN PKR.

Sr. No	Fee Head	1st Year (2025-26)	2nd Year (2025-26)	3rd Year (2025-26)	4th Year (2025-26)	5th Year (2025-26)	Total
5	PMDC Registration (or as applicable) PKR	15,000	-	-	-	-	15,000
6	UHS Registration (or as applicable) (PKR)	24,000	-	-	-	-	24,000
7	Admission Registration Fee (PKR)	2,000	-	-	-	-	2,000
8	Medical Treatment Student (PKR)	6,000	6,540	7,129	7,770	8,469	35,908
	Total:	47,000	6,540	7,129	7,770	8,469	76,908

OPTIONAL FEE & CHARGES PKR.

Sr. No	Fee Head	1st Year (2025-26)	2nd Year (2025-26)	3rd Year (2025-26)	4th Year (2025-26)	5th Year (2025-26)
1	Hostel Rent Charges (Annual)	267,070	291,106	317,306	345,863	376,991
2	Hostel Rent Charges (Monthly)	22,256	24,259	26,442	28,822	31,416
3	Transport Charges:	As per actual.				
4	Food Charges (Hostel Residents):	As per actual.				

Note:

- An amount of Rs. 50,000/- will require to be deposited as refundable Hostel Security in case of avail- ing the Hostel facility.
- Fee structure will be reviewed if the official / documented inflation goes above 12 %.
- Section 9 (3) of Medical and Dental Undergraduate Education (Admissions, Curriculum and Conduct) Policy and Regulations, 2023 provides as under:
"9(3) A student shall have the right to pay the tuition fee on a quarterly, six monthly or annual basis to the college. A Student paying the college on a six-monthly basis in advance shall be granted a two per- cent discount in the tuition fee and a student paying the college on an annual basis in advance shall be granted a four percent discount in the tuition fee"

ANNUAL FEE STRUCTURE ACADEMIC YEAR 2025-26 LOCAL STUDENTS 6 YEAR MBBS MEDICAL ENRICHMENT PROGRAM

Sr. No	Fee Head	1st Year (2025-26) MBBS 1st Year	2nd Year (2025-26)	3rd Year (2025-26) MBBS 2nd Year	4th Year (2025-26) MBBS 3rd Year	5th Year (2025-26) MBBS 4th Year	6th Year (2025-26) MBBS 5th Year	Total
1	Admission Fee	45,882	-	-	-	-	-	-
2	Tuition Fee	2,294,119	-	2,500,590	2,725,643	2,970,951	3,238,336	-
3	College Fee Total	2,340,001	-	2,500,590	2,725,643	2,970,951	3,238,336	13,775,521
4	UHS @5.5 % (or as applicable)	128,700	-	137,532	149,910	163,402	178,108	757,654
5	PMDC Registration (or as applicable)	15,000	-	-	-	-	-	15,000
6	UHS Registration (or as applicable)	24,000	-	-	-	-	-	24,000
7	Admission Registration Fee	2,000	-	-	-	-	-	2,000
8	Medical Treatment Student	6,000	-	6,540	7,129	7,770	8,469	35,908
	Total:	2,515,701	-	2,644,662	2,882,682	3,142,123	3,424,914	14,610,083

OPTIONAL FEE & CHARGES PKR.

Sr. No	Fee Head	1st Year (2025-26)	2nd Year (2025-26)	3rd Year (2025-26)	4th Year (2025-26)	5th Year (2025-26)	6th Year (2025-26)
1	Hostel Rent Charges (Annual)		267,070	291,106	317,306	345,863	376,991
2	Hostel Rent Charges (Monthly)		22,256	24,259	26,442	28,822	31,416
3	Transport Charges:	As per actual.					
4	Food Charges (Hostel Residents):	As per actual.					

Note:

- An amount of Rs. 50,000/- will require to be deposited as refundable Hostel Security in case of avail- ing the Hostel facility.
- Fee structure will be reviewed if the official / documented inflation goes above 12 %.
- Section 9 (3) of Medical and Dental Undergraduate Education (Admissions, Curriculum and Conduct) Policy and Regulations, 2023 provides as under:
"9(3) A student shall have the right to pay the tuition fee on a quarterly, six monthly or annual basis to the college. A Student paying the college on a six monthly basis in advance shall be granted a two per- cent discount in the tuition fee and a student paying the college on an annual basis in advance shall be granted a four percent discount in the tuition fee"

ANNUAL FEE STRUCTURE ACADEMIC YEAR 2025-26 FOREIGN STUDENTS 6 YEAR MBBS MEDICAL ENRICHMENT PROGRAM

Sr. No	Fee Head	1st Year (2025-26) MBBS 1st Year	2nd Year (2025-26)	3rd Year (2025-26) MBBS 2nd Year	4th Year (2025-26) MBBS 3rd Year	5th Year (2025-26) MBBS 4th Year	6th Year (2025-26) MBBS 5th Year	Total
1	Admission Fee (2% of Tuition Fee) in US \$	300	-	-	-	-	-	-
2	Tuition Fee in US \$	15,000	-	16,350	17,822	19,425	21,174	-
3	College Fee in US \$ (Admission Fee + Tuition Fee)	15,300	-	16,350	17,822	19,425	21,174	90,071
4	UHS @5.5 % (or as applicable) in US \$	842	-	899	980	1,068	1,165	4,954
	Total College Fee in US \$.	16,142	-	17,249	18,802	20,494	22,338	95,025

OTHER CHARGES IN PKR.

Sr. No	Fee Head	1st Year (2025-26) MBBS 1st Year	2nd Year (2025-26)	3rd Year (2025-26) MBBS 2nd Year	4th Year (2025-26) MBBS 3rd Year	5th Year (2025-26) MBBS 4th Year	6th Year (2025-26) MBBS 5th Year	Total
5	PMDC Registration (or as applicable) PKR	15,000	-	-	-	-	-	15,000
6	UHS Registration (or as applicable) (PKR)	24,000	-	-	-	-	-	24,000
7	Admission Registration Fee (PKR)	2,000	-	-	-	-	-	2,000
8	Medical Treatment Student (PKR)	6,000	-	6,540	7,129	7,770	8,469	35,908
	Total Other Charges In PKR.	47,000	-	6,540	7,129	7,770	8,469	76,908

OPTIONAL FEE & CHARGES PKR.

Sr. No	Fee Head	1st Year (2025-26)	2nd Year (2025-26)	3rd Year (2025-26)	4th Year (2025-26)	5th Year (2025-26)	6th Year (2025-26)
1	Hostel Rent Charges (Annual)		267,070	291,106	317,306	345,863	376,991
2	Hostel Rent Charges (Monthly)		22,256	24,259	26,442	28,822	31,416
3	Transport Charges:	As per actual.					
4	Food Charges (Hostel Residents):	As per actual.					

Note:

- An amount of Rs. 50,000/- will require to be deposited as refundable Hostel Security in case of availing the Hostel facility.
- Fee structure will be reviewed if the official / documented inflation goes above 12 %.
- Section 9 (3) of Medical and Dental Undergraduate Education (Admissions, Curriculum and Conduct) Policy and Regulations, 2023 provides as under:
"9(3) A student shall have the right to pay the tuition fee on a quarterly, six monthly or annual basis to the college. A Student paying the college on a six monthly basis in advance shall be granted a two per cent discount in the tuition fee and a student paying the college on an annual basis in advance shall be granted a four percent discount in the tuition fee"

SCHOLARSHIP & AWARDS

The College disburses merit Scholarships to students showing outstanding performance in the examinations held by the University of Health Sciences Lahore. The scholarship is only for positions obtained at the University level amongst all the institutions affiliated with the University of Health Sciences Lahore.

The following Scholarships are awarded to the students obtaining first, second and third positions in the University Examinations among all the participating students:

- Ch. Nazar Mohammad Award; equal to 100% (Full) Tuition Fee for SMDC students standing First in the University Examination.
- Ch. Mohammad Husain Award; equal to 75% Tuition Fee for SMDC students standing Second in the University Examination.
- Prof. Muhammad Akhtar Khan Award; equal to 50% Tuition Fee for SMDC students standing Third in the University Examination.

This scholarship is awarded for one year and is reviewed after the subsequent professional examination.



9TH INTERNATIONAL CONFERENCE “BRIDGING THEORY AND PRACTICE”

The 9th International Conference titled “Bridging Theory and Practice”, was held from April 23 to 26, 2025, at Shalamar Medical & Dental College. The conference was well received and served as a transformative milestone in Pakistan’s academic and healthcare horizon.

The conference served as a confluence of thought leaders, established researchers and seasoned educationists to explore the ever-evolving intersections of medical sciences with clinical practices. An impressive array of around 100 presentations, 53 scientific sessions and 50 hands on workshops were conducted during the event, which served as a vibrant platform for interdisciplinary exchange, showcasing cutting-edge research, technological advancements and pedagogical innovations.

From molecular biology and AI-driven diagnostics to ethical deliberations and faculty development, each session echoed the conference’s core mission: to dissolve silos between theory and practice and foster a future-ready healthcare ecosystem.

One of the highlights of the conference was the visionary plenary session, followed by spirited panel discussions, the conference reaffirmed the institution's commitment to academic excellence, global collaboration and transformative learning, turning this event into a movement toward reimagining healthcare education with integrity, compassion, and innovation at its heart.



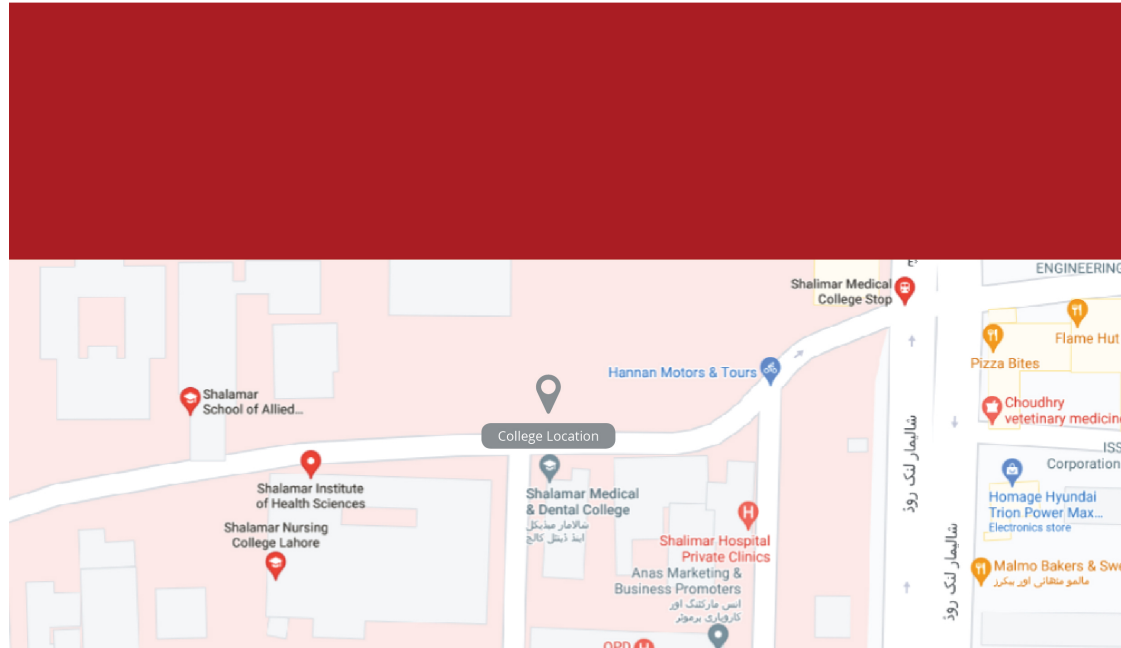
4TH INTEGRATED CONVOCATION

Shalamar Institute of health sciences held its fourth integrated Convocation, where students from all units of the institute were celebrated for their achievements. The event witnessed the conferring of degrees and medals upon the graduating cohort, marking a significant milestone in their academic journey.

Esteemed guests, including Vice-Chancellor of Kind Edward Medical University Professor Mahmood Ayyaz, graced the occasion, underscoring the importance of academic excellence in the field of health sciences. Chairman of Shalamar Institute of Health Sciences, Mr. Shahid Hussain, also honored the event with his presence, reflecting the institute's commitment to fostering future healthcare leaders. The ceremony was further adorned by the presence of distinguished Principals, Prof. Dr. Zahid Bashir Principal of Shalamar Medical & Dental College, Dr. Riffat Javaid Principal of Shalamar School of Allied Health Sciences, and Ms. Nasim Rafiq, Principal of Shalamar Nursing College, who extended their heartfelt congratulations to the graduating students.

A pivotal moment of the convocation was the solemn oath-taking ceremony, wherein future Doctors, Nurses, and Health Professionals pledged their commitment to uphold the highest standards of ethics and service to humanity. A total of 298 students were conferred with degrees, representing diverse disciplines within the health sciences domain. Among them 147 doctors from Shalamar Medical and Dental College, 74 nurses from the Nursing College, and 77 students from Allied Health Sciences, each poised to make significant contributions to the healthcare landscape.





Get in Touch !

Address:

Shalamar Link Road,
Mughalpura Lahore,
Pakistan.

Phone: +92 (42) 3681 8604

+92 (42) 3685 2685, +92 (42) 3685 2609

Fax: +92 (42) 3683 5555

Email: info@smdc.edu.pk

Fb: SIHS.ShalamarHospital

In: Shalamar Institute of Health Sciences

www.smdc.edu.pk